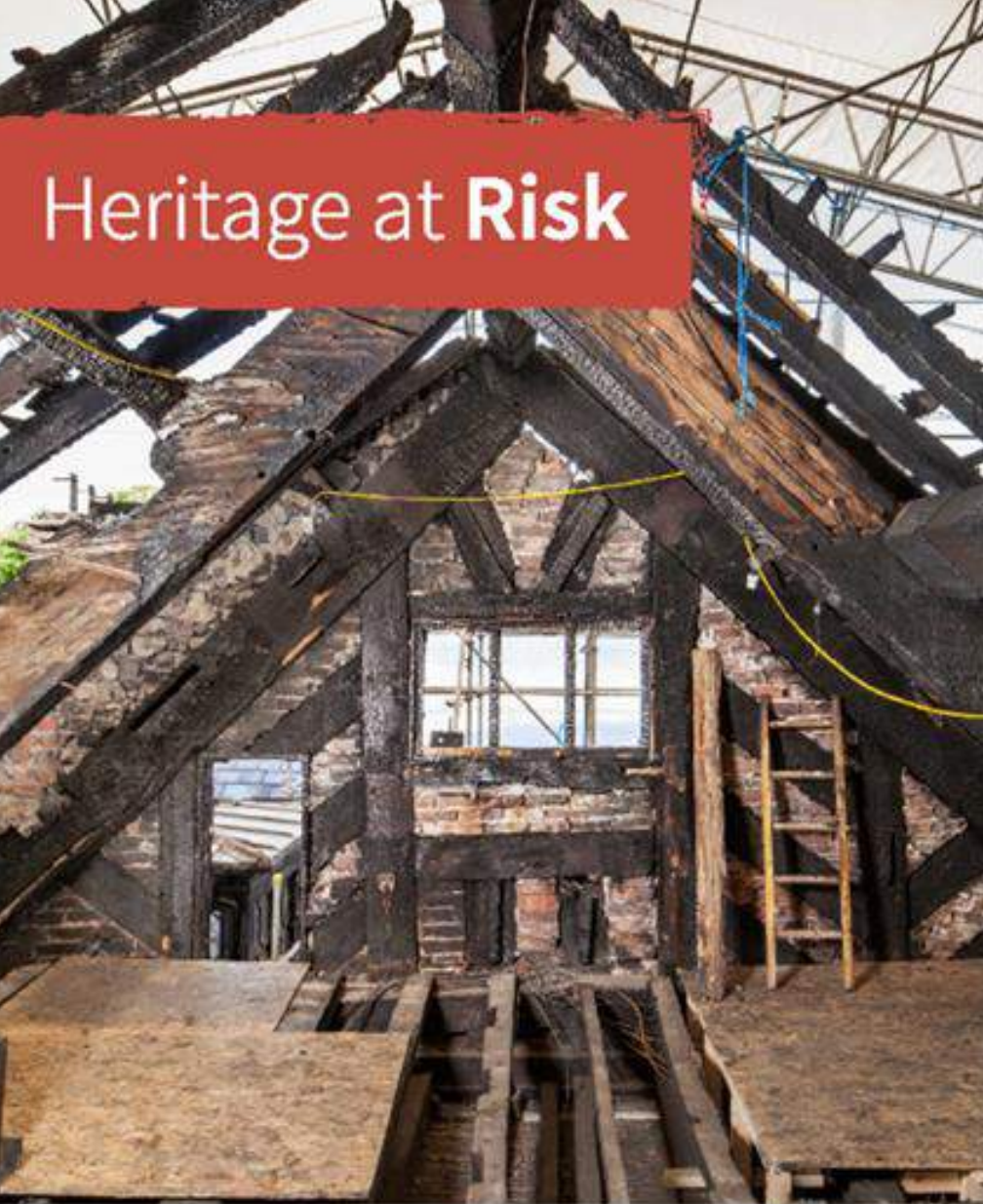


Heritage at Risk



Wythenshawe Hall
Friends groups support



Church and Community Group support

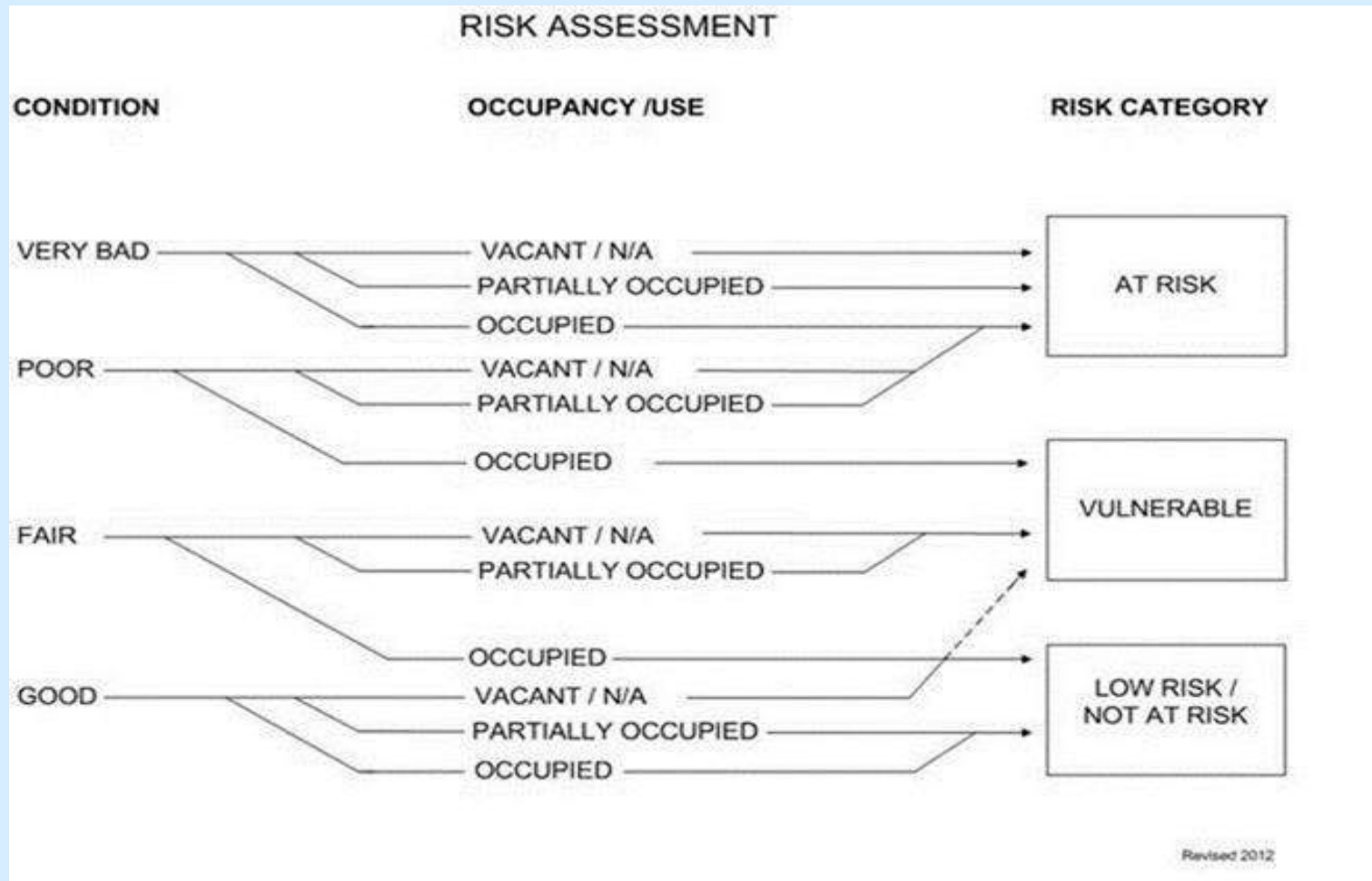


Heritage at Risk Register

- Heritage at Risk Register (2008)
 - Buildings & Structures
 - Places of Worship grade 1, 2* & 2
 - Archaeological sites
 - Conservation Areas (2010)
 - Registered parks & gardens
 - Registered battlefields
 - Protected wrecks
- Stopping the Rot,
 - guidance on mothballing and maintenance

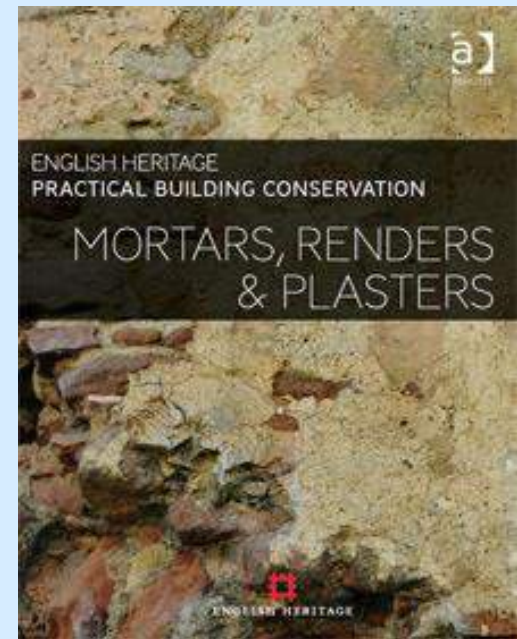
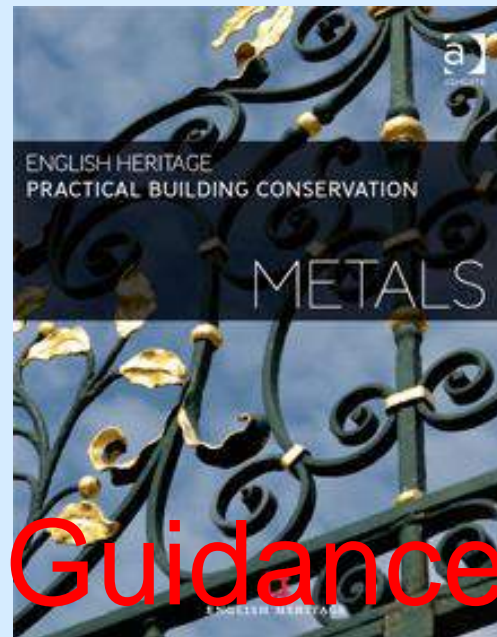


Buildings and Structures



for PoW's this relates to any specific element of the building fabric





Guidance

Advice

<https://historicengland.org.uk/advice/technical-advice/>

Case Studies

Added benefits of:-

Using an Architect;

Manchester, Gaskell House

Using a Surveyor;

Manchester, Gorton Monastery

Using a Structural Engineer;

Chester, Proylaeum Gateway



Heritage at Risk

The Architect: Gaskell House, Manchester

The trust shortlisted and interviewed 4 potential architect based practices within the Greater Manchester area

Scrutinising their experience and knowledge of similar buildings and the process they go through when working alongside a building preservation trust.

Some weighting placed on the actual value of the competitive £ price. But other factors had an influence of the actual award of the appointment.



Historic England

Heritage at Risk

Architect RIBA & AABC
High level of understanding
about building techniques,
methods and history.

Evaluation of building
pathology and the study of
how and why buildings fail
through poor original detailing
and choices of materials.

Individual creativity to
understand and propose
alternative solutions.

In control of all aspects from
the initial conception through
to completion of a project.

They will usually rely on
some additional professional
help, but will always act as
the lead designer.

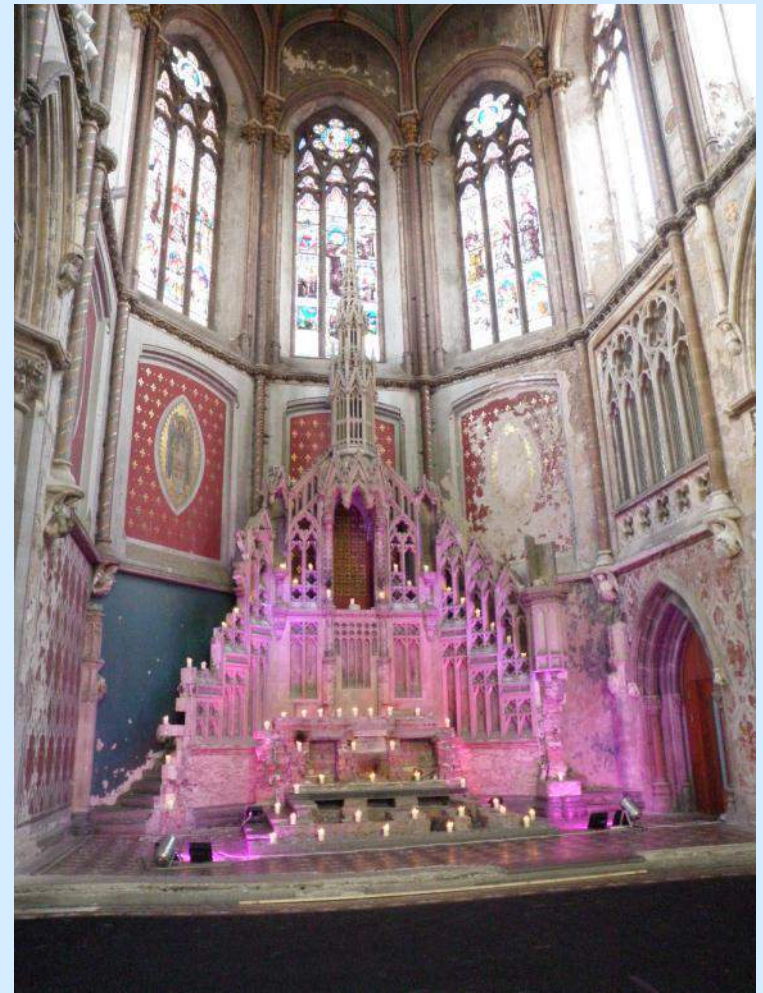


Historic England

Heritage at Risk

The Surveyor: Gorton Monastery, Manchester

Here used for a specialised project, but the trust have used various types of professionals depending on the nature of the work



Consolidation and conservation of the Sanctuary painting and the High Altar



Historic England

Heritage at Risk

The specialised consolidation techniques were detailed, recorded and co-ordinated by the surveyor, who has a great interest in the field of painting conservation.

The surveyor in this case is a SPAB (Society for the Protection of Ancient Buildings) Lethaby Scholar.



Windows through the paint layers



Historic England

Heritage at Risk

The Structural Engineer: Propylaeum Gateway, Chester

Taking the lead with replacing cast iron gutters and forming a new lead roof, evaluating the failing ground condition and installing micro-piles.

Grant funding from Historic England included substantial support from the local authority with regards to lighting and street signage.



Photos by
Andy Marshall:
Architectural Photography



Historic England

Heritage at Risk



Opening up and progress



Historic England

HE's Local HAR Team

The local Heritage at Risk (HAR) Team works proactively with owners, volunteers, local authorities and funders to find solutions for all types of historic sites.

- Project Officers – for advice on funding and project work.
 - Tamsin Cooke and Sarah Howard
- Landscape Architect – for advice on parks, gardens and cemeteries
 - Chris Mayes
- Architects – for technical advice on repairs and re-use
 - Peter Barlow and Tim Wilkins
- Principal Advisor – for advice on delivery of local HAR program
 - Charles Smith

Visit www.HistoricEngland.org.uk/risk for more information about HAR

For general enquiries call 0161 242 1416

Or email northwest@HistoricEngland.org.uk

