

SUM × STUDIOS

ARTS + BUSINESS + COMMUNITY



1935



2016































A close-up photograph of a rectangular stone plaque mounted on a wall. The plaque is light-colored and features the word "Infants" carved in a stylized, serif font. The word is enclosed within a decorative, rounded rectangular frame with ornate scrollwork on the sides. The stone shows signs of wear, including dark smudges and small holes. The plaque is set between two courses of rough-hewn, rectangular stone blocks.

Infants













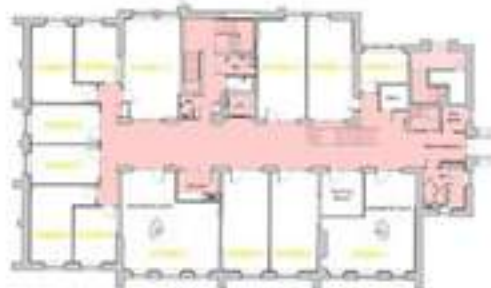




PHASE 2: SUM STUDIOS A: ARTS STUDIOS & RECYCLE BIKES



PHASE 1: SUM STUDIOS B: BUSINESS STUDIOS



PHASE 2: SUM STUDIOS C: COMMUNITY HUB & VENUE





























































